

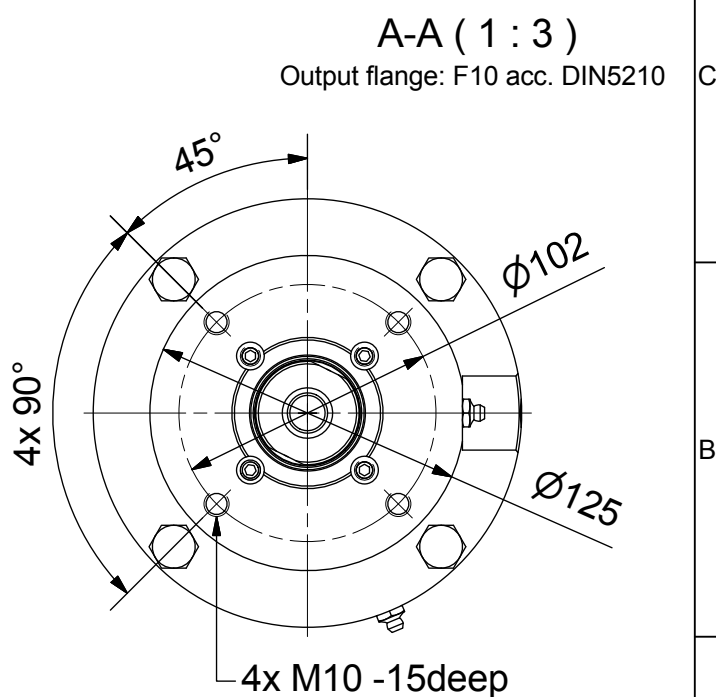
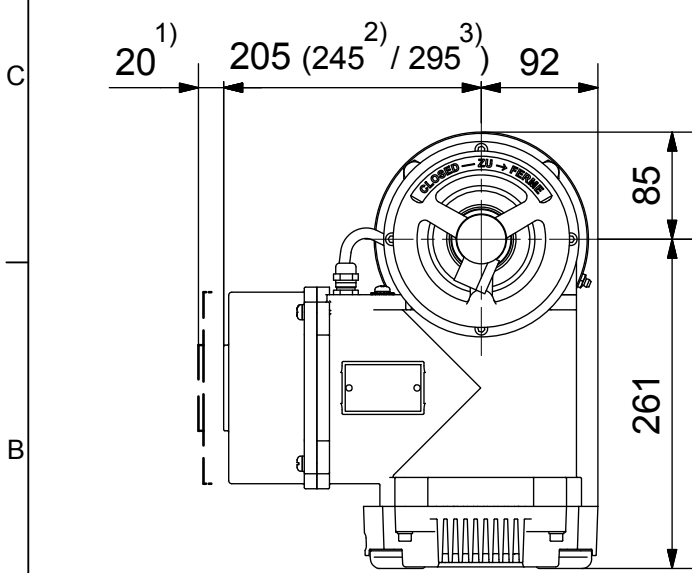
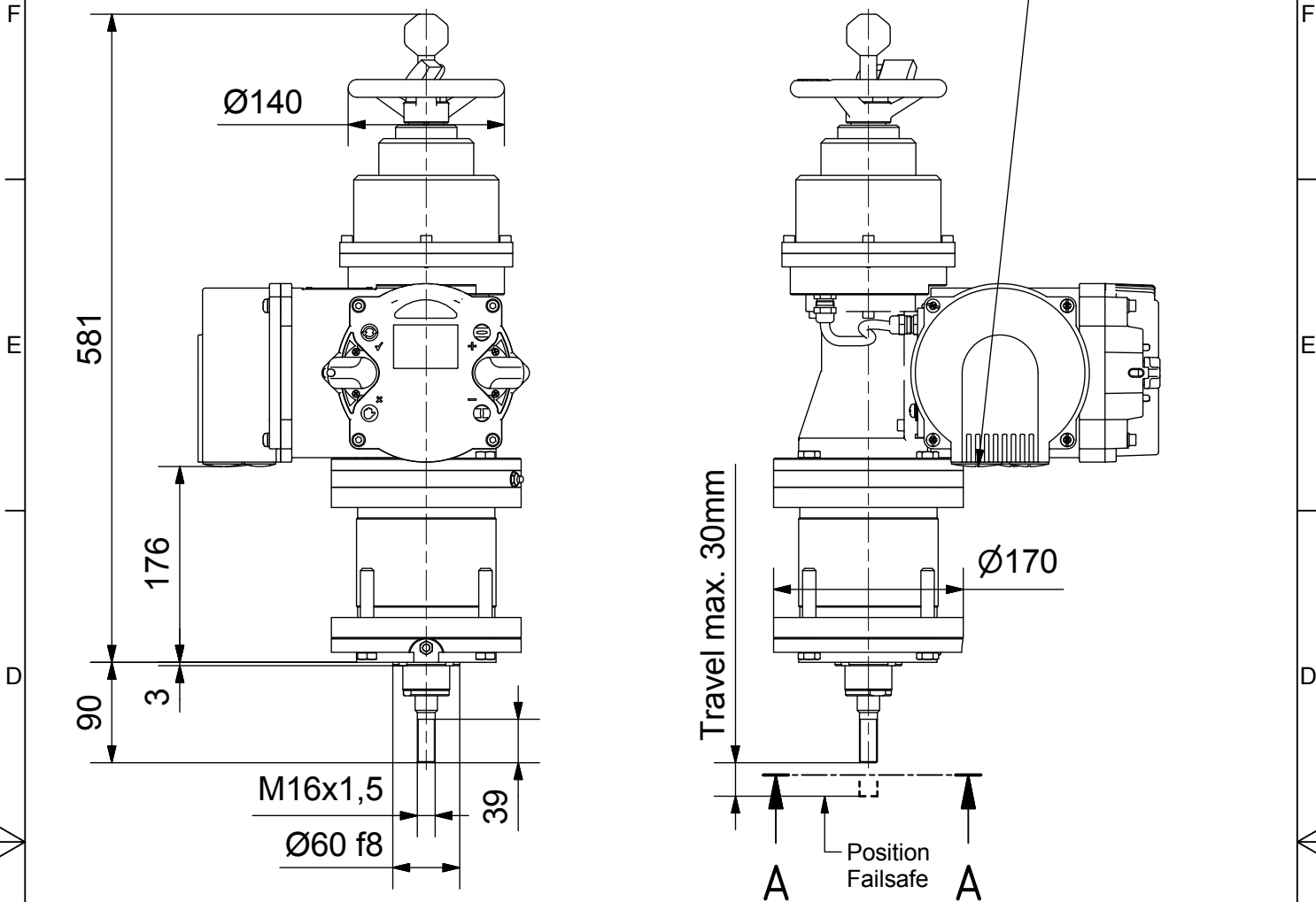
4

3

2

1

Screw plugs (cable gland): 1x M40x1,5; 1x M32x1,5; 1x M25x1,5



A-A (1 : 3)  
Output flange: F10 acc. DIN5210

- 1) Space required for removing cover
- 2) for ex terminal box with bus connection "DP"
- 3) for 3 phase version "SDC480"

**SCHIEBEL**

Dimensions All dimensions in mm

**Actusafe CM03FS30.5**

Type: with handwheel, extending, F10  
travel max. 30mm, force 5kN

M-CM03FS30_5-06E		
	Dated	Name
drawn	20.12.2016	H.Mayer
checked		

Antriebstechnik  
Gesellschaft m.b.H.  
Josef Benc Gasse 4  
A - 1230 Vienna

