

Screw plugs (cable gland):
1x M40x1,5 / 2x M20x1,5

1046

620

79

3

63

M36x3 (for F14)

Ø70 f8

Travel max. 100mm

Ø320

54

30

M20x1,5 (for F10)

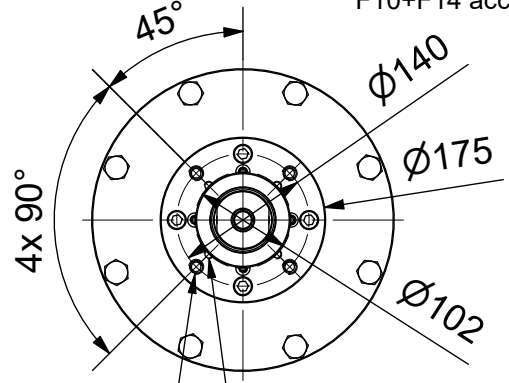
A

Position
Failsafe

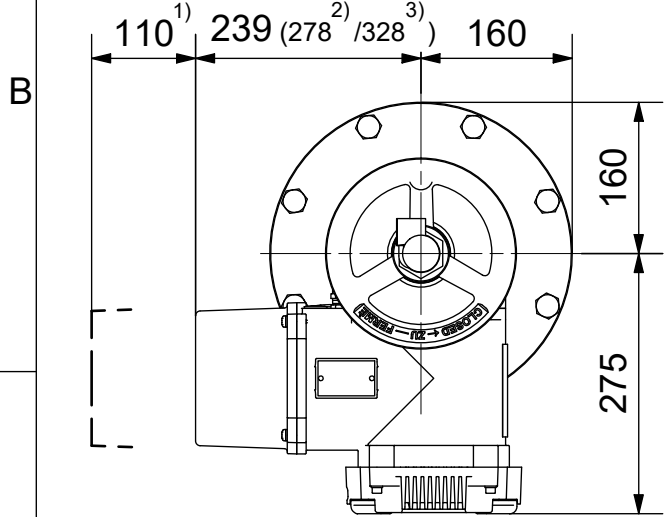
A

A-A (1 : 8)

Output flange:
F10+F14 acc. DIN5210



4x M10 - 15deep
4x M16 - 18deep



- 1) Space required for removing cover
- 2) for ex terminal box with bus connection "DP"
- 3) for 3 phase version "SDC480"

SCHIEBEL

Antriebstechnik
Gesellschaft m.b.H.
Josef Benc Gasse 4
A - 1230 Vienna

Dimensions

Actusafe exCM06FS100.30
Type: with handwheel "close down", F10+F14
Travel max. 100mm, force 30kN

All dimensions in mm

M-CM06FS100_30-2E

	Dated	Name
drawn	20.09.2017	H.Mayer
checked		

