

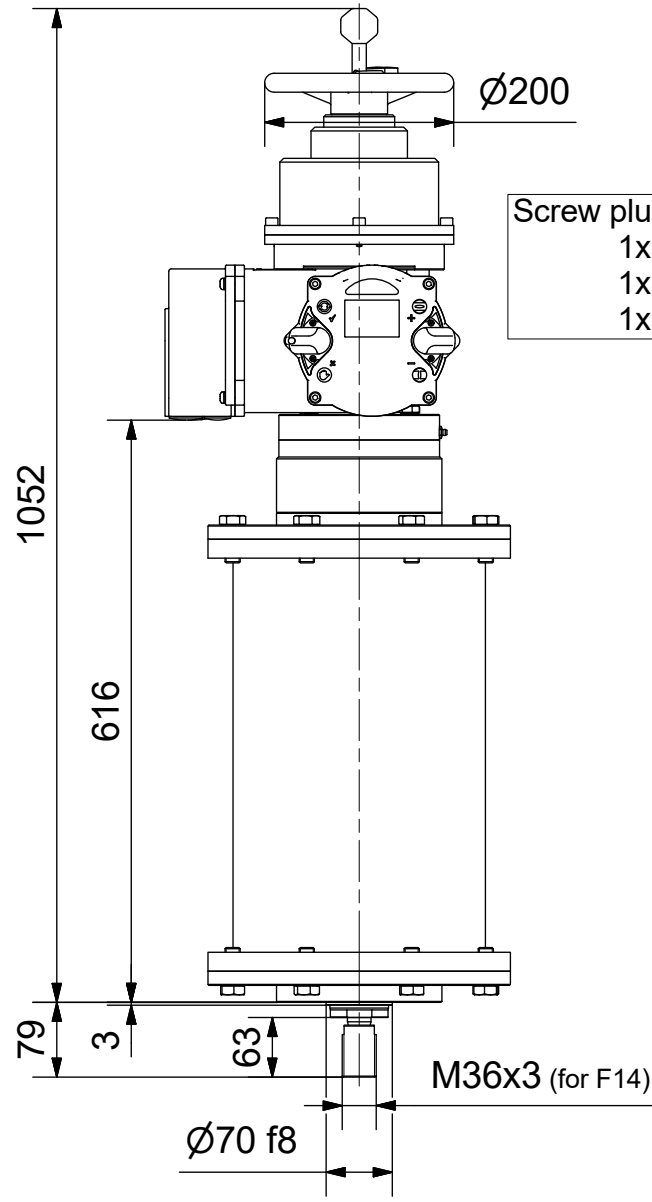
6 5 4 3 2 1

D

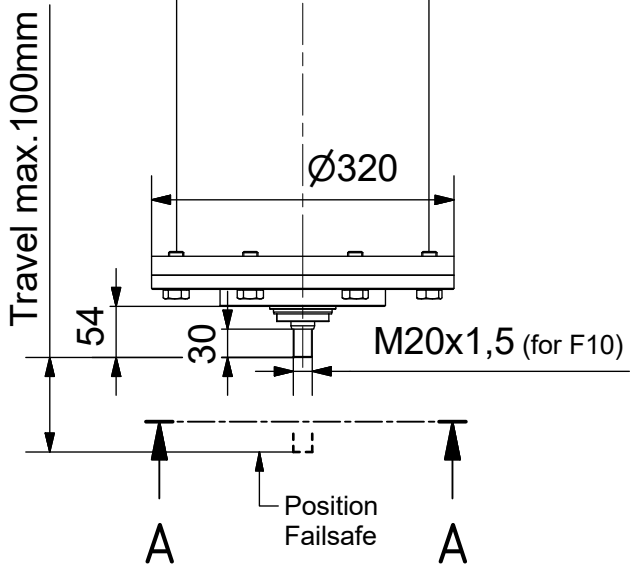
C

B

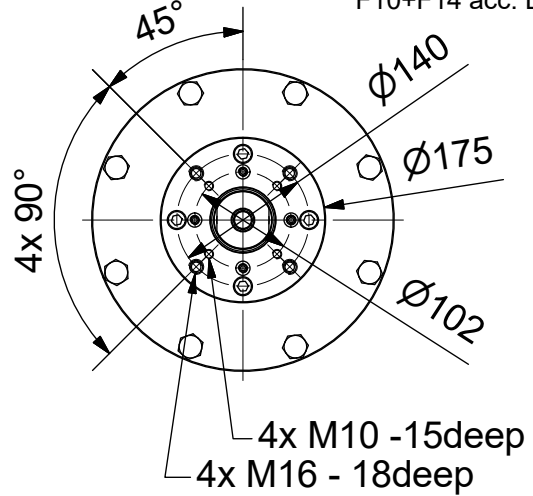
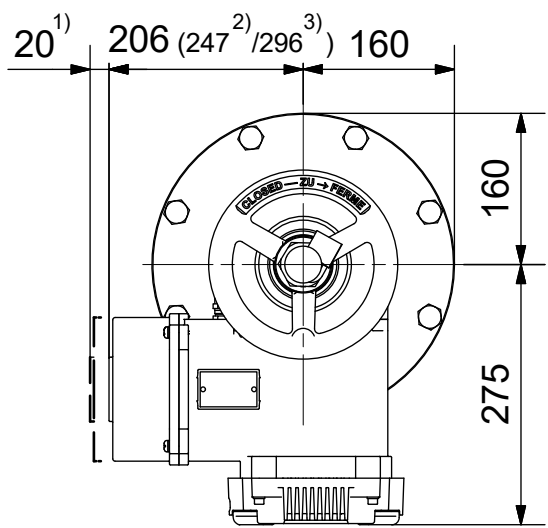
A



Screw plugs (cable gland):  
 1x M25x1,5  
 1x M32x1,5  
 1x M40x1,5



A-A (1 : 8)  
 Output flange:  
 F10+F14 acc. DIN5210



- 1) Space required for removing cover
- 2) for ex terminal box with bus connection "DP"
- 3) for 3 phase version "SDC480"

**SCHIEBEL**

Dimensions  
 All dimensions in mm  
**Actusafe CM06FS100.30**  
 Type: with handwheel "close down", F10+F14  
 Travel max. 100mm, force 30kN

M-CM06FS100\_30-4E

|         | Dated      | Name    |
|---------|------------|---------|
| drawn   | 27.09.2017 | H.Mayer |
| checked |            |         |

6 5 4 3 2 1