

4

3

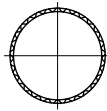
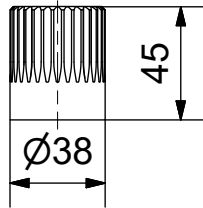
2

1

Coupling

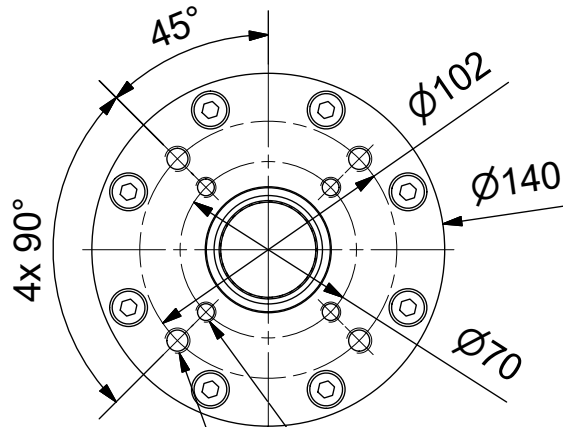
Parallelkey groove acc.to DIN6885

max.Ø25 / max.□22



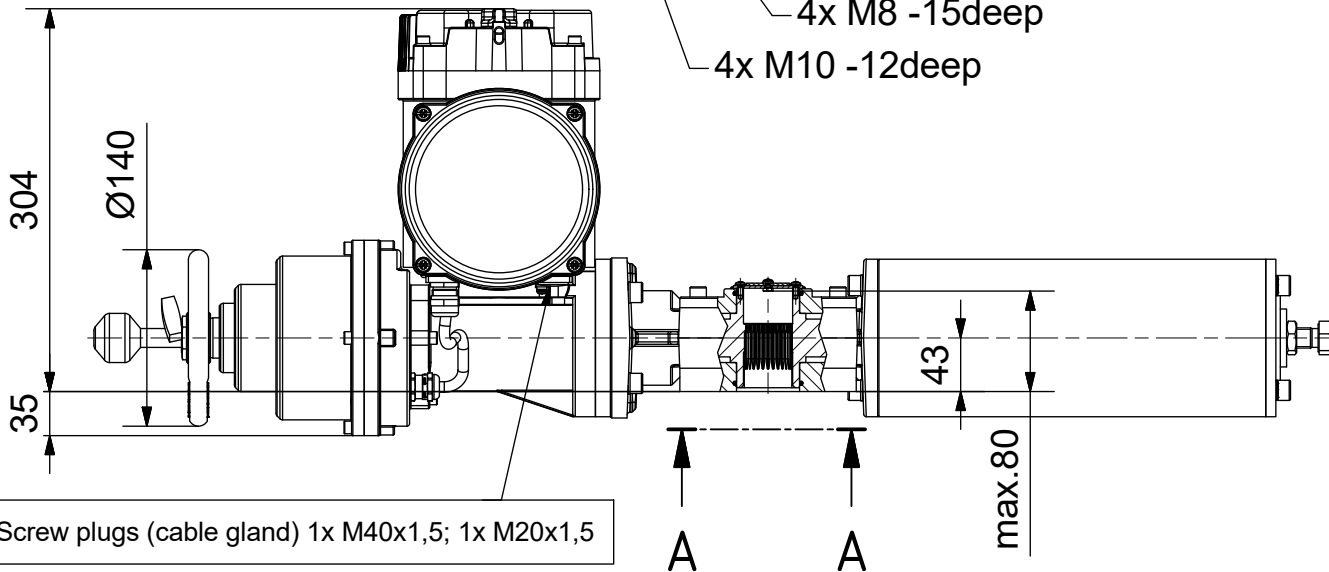
A-A (1:3)

Output Drive: F07, F10 acc. DIN5211



4x M8 -15deep

4x M10 -12deep



Screw plugs (cable gland) 1x M40x1,5; 1x M20x1,5

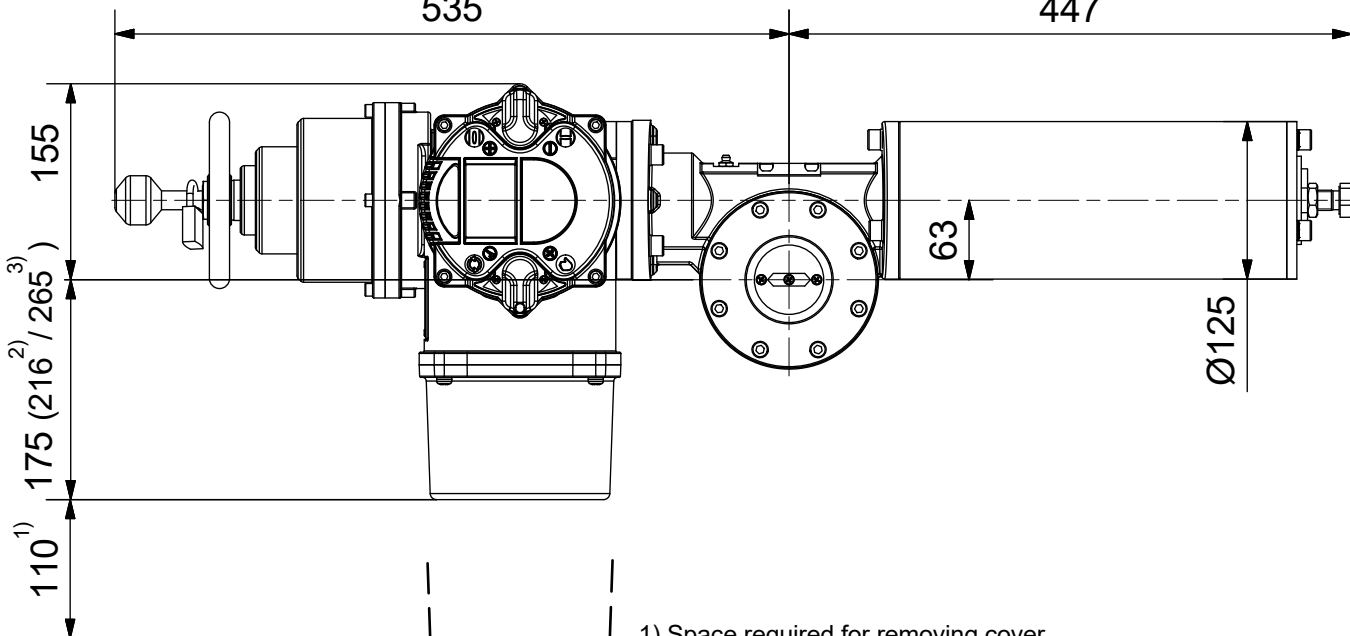
A

A

max.80

535

447



- 1) Space required for removing cover
- 2) for ex terminal box with bus connection "DP"
- 3) for 3 phase version "SDC480"

**SCHIEBEL**

Dimensions

All dimensions in mm

M-CM03FSQT30-21E

Actusafe 90° HA

exCM03FSQT30 with handwheel, F07+F10

Type: Failsafe CLOSE= cw turning, max. 300Nm

Antriebstechnik
Gesellschaft m.b.H.
Josef Benc Gasse 4
A - 1230 Vienna

	Dated	Name
drawn	12.04.2019	H.Mayer
checked		

G:\Inventor\Failsafe\CMFSQT\CM03FSQT30\M-CM03FSQT30-21E.idw



4

3

2

1