

4

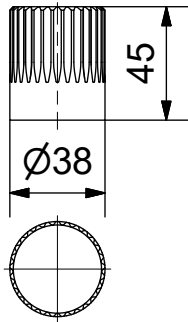
3

2

1

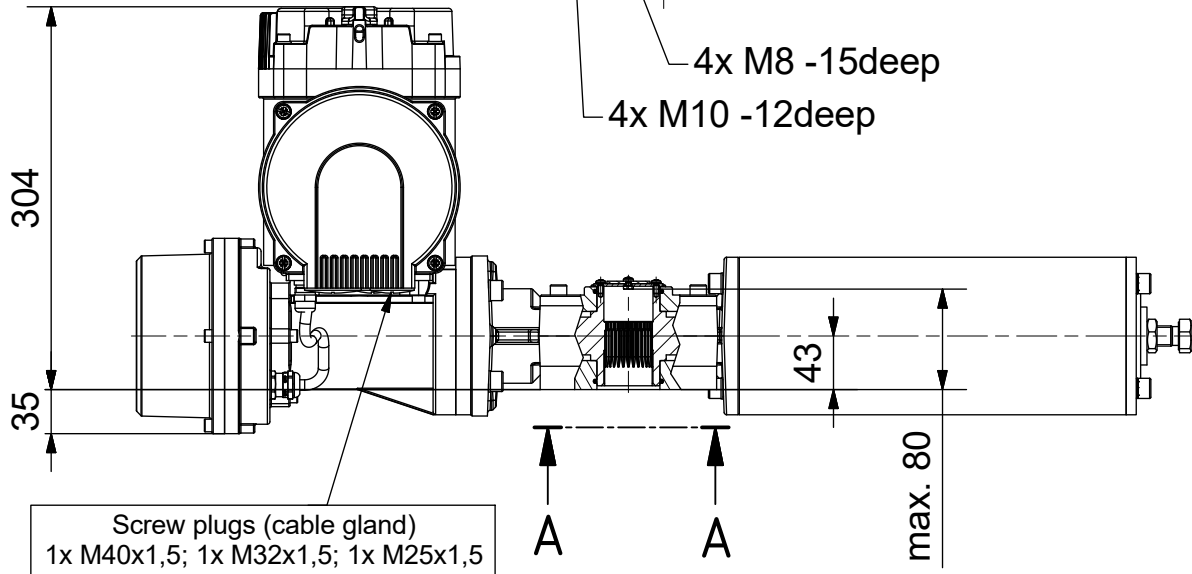
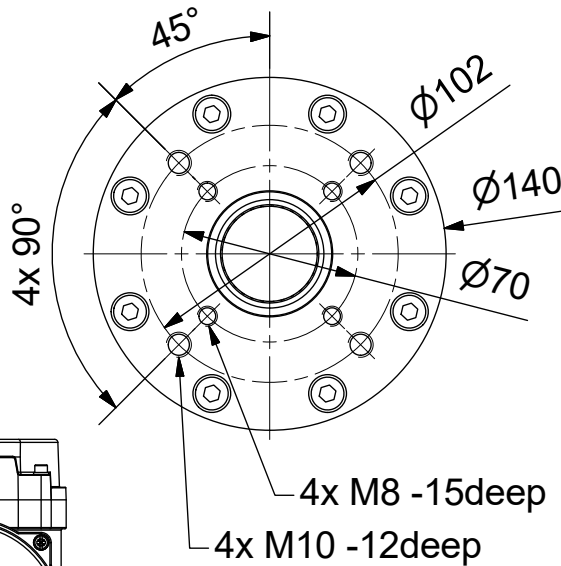
## Coupling

Parallelkey groove acc.to DIN6885  
max.Ø25 / max.□22

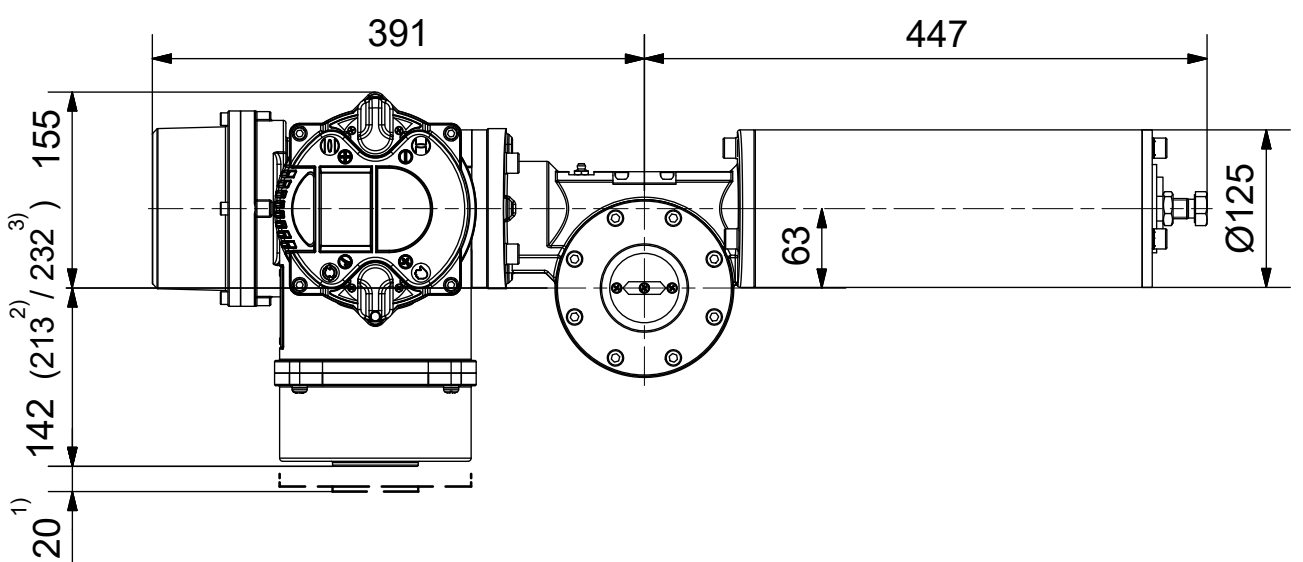


Output Drive: F07, F10 acc. EN ISO 5211

## A-A (1 : 3)



Screw plugs (cable gland)  
1x M40x1,5; 1x M32x1,5; 1x M25x1,5



- 1) Space required for removing cover  
2) for terminal box with bus connection "DP"  
3) for 3 phase version "SDC480"

**SCHIEBEL**

## Dimensions

All dimensions in mm

M-CM03FSQT30-22E

Actusafe 90°

CM03FSQT30 F07+F10

Type: Failsafe CLOSE= cw turning, max. 300Nm

Antriebstechnik  
Gesellschaft m.b.H.  
Josef Benc Gasse 4  
A - 1230 Vienna

	Dated	Name
drawn	20.03.2019	H.Mayer
checked		

G:\Inventor\Failsafe\CMF\SQT\CM03FSQT30\M-CM03FSQT30-22E.idw



4

3

2

1