

4

3

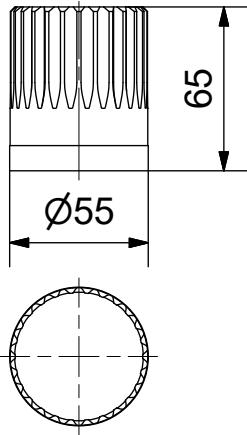
2

1

Coupling

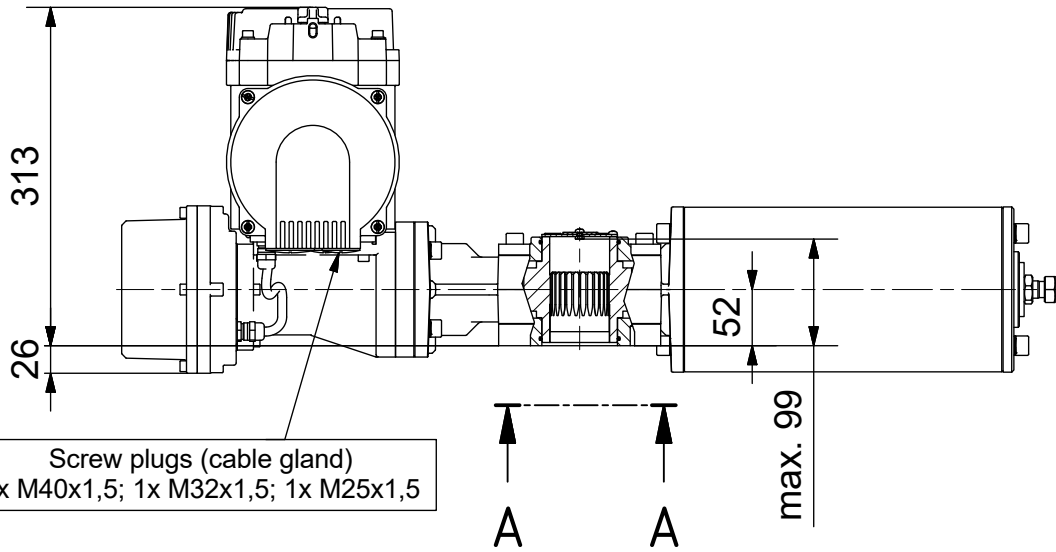
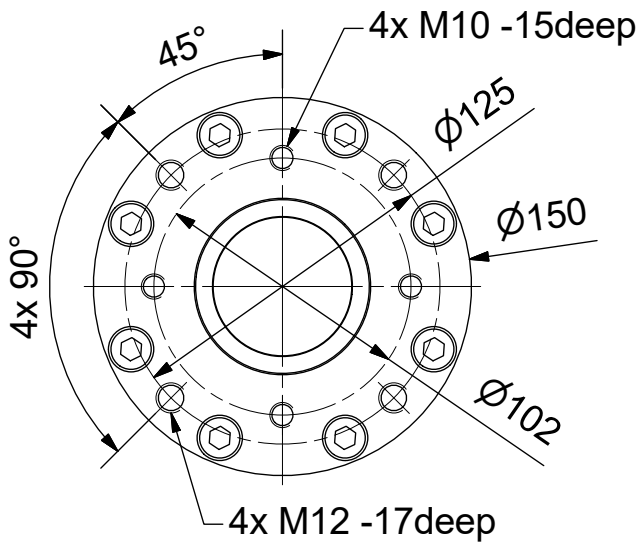
Parallelkey groove acc.to DIN6885

max.Ø40 / max.□32

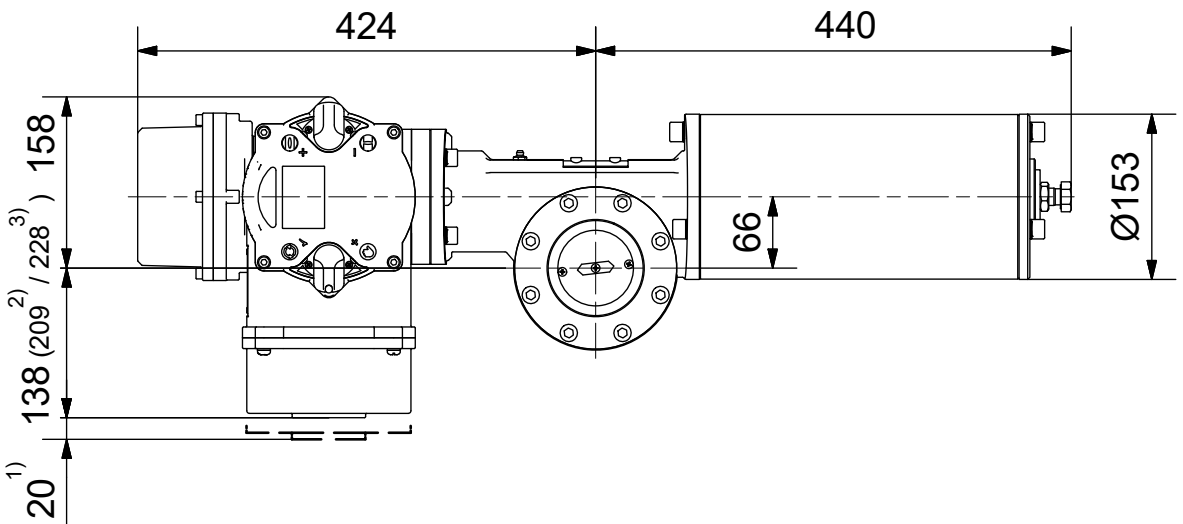


A-A (1 : 3)

Output Drive: F10, F12 acc. DIN5211



Screw plugs (cable gland)
1x M40x1,5; 1x M32x1,5; 1x M25x1,5



- 1) Space required for removing cover
- 2) for terminal box with bus connection "DP"
- 3) for 3 phase version "SDC480"

SCHIEBEL

Dimensions

All dimensions in mm

M-CM03FSQT60-22E

Actusafe 90°

CM03FSQT60 F10+F12

Type: Failsafe CLOSE= cw turning, max. 600Nm

Antriebstechnik
Gesellschaft m.b.H.
Josef Benc Gasse 4
A - 1230 Vienna

	Dated	Name
drawn	09.11.2017	H.Mayer
checked		



4

3

2

1