

6

5

4

3

2

1

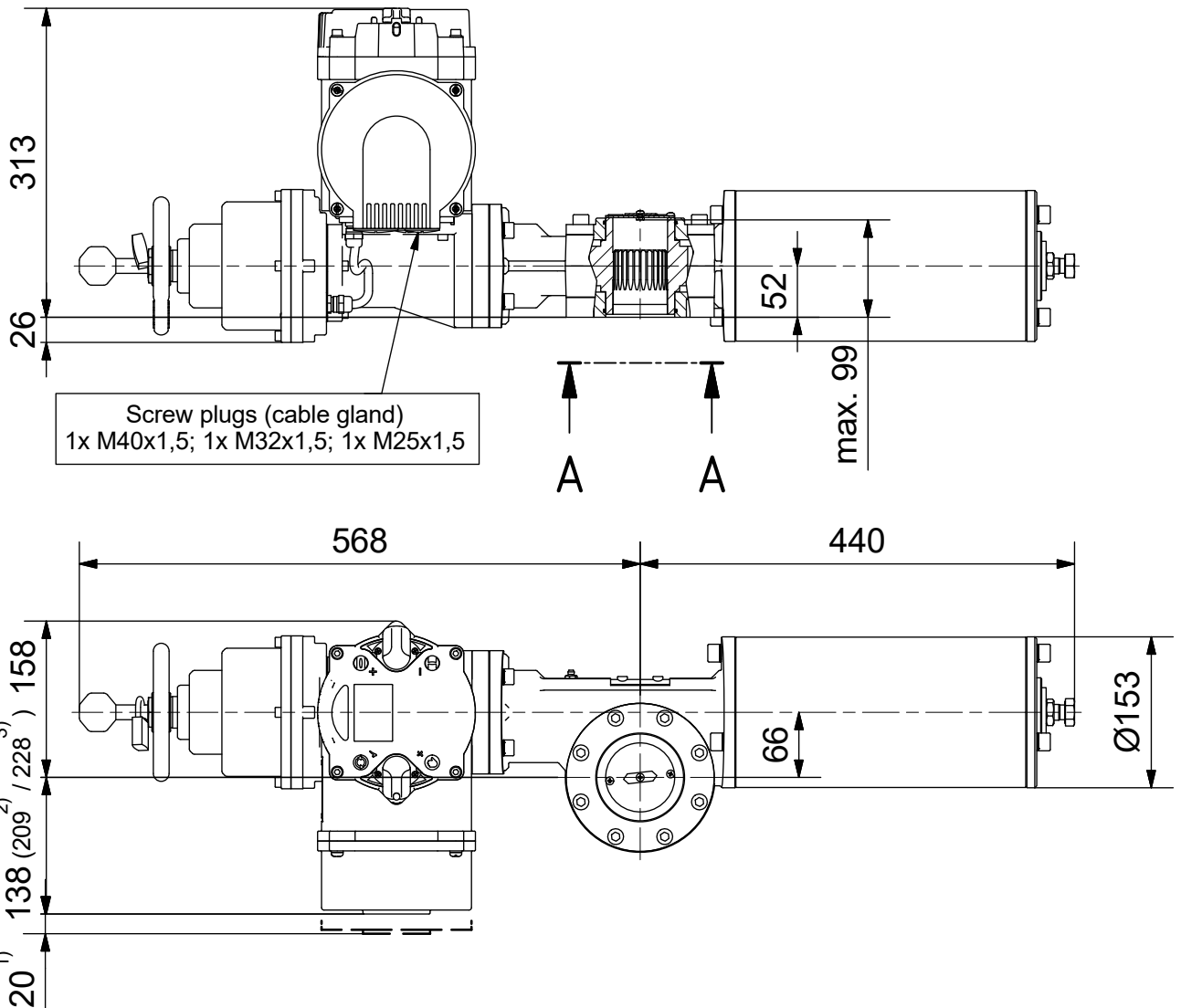
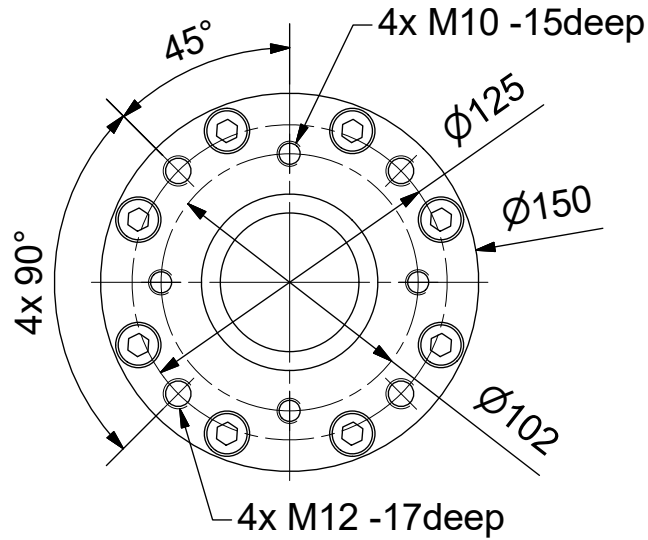
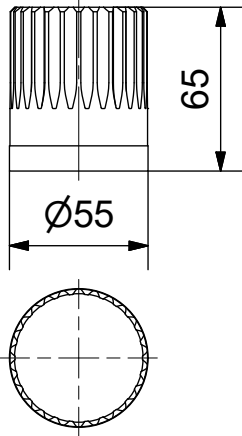
Coupling

Parallelkey groove acc.to DIN6885

max.Ø40 / max.□32

Output Drive: F10, F12 acc. DIN5211

A-A (1 : 3)



- 1) Space required for removing cover
- 2) for terminal box with bus connection "DP"
- 3) for 3 phase version "SDC480"

SCHIEBEL

Antriebstechnik
Gesellschaft m.b.H.
Josef Benc Gasse 4
A - 1230 Vienna

Dimensions

All dimensions in mm

Actusafe 90° HA

CM03FSQT60 with handwheel F10+F12
Type: Failsafe CLOSE= cw turning, max. 600Nm

MCM03FSQT60-23E

| | Dated | Name |
|---------|------------|---------|
| drawn | 13.11.2017 | H.Mayer |
| checked | | |

G:\Inventor\Failsafe\CMFSQT\CM03FSQT60M-CM03FSQT60-23E.idw



6

5

4

3

2

1