

4

3

2

1

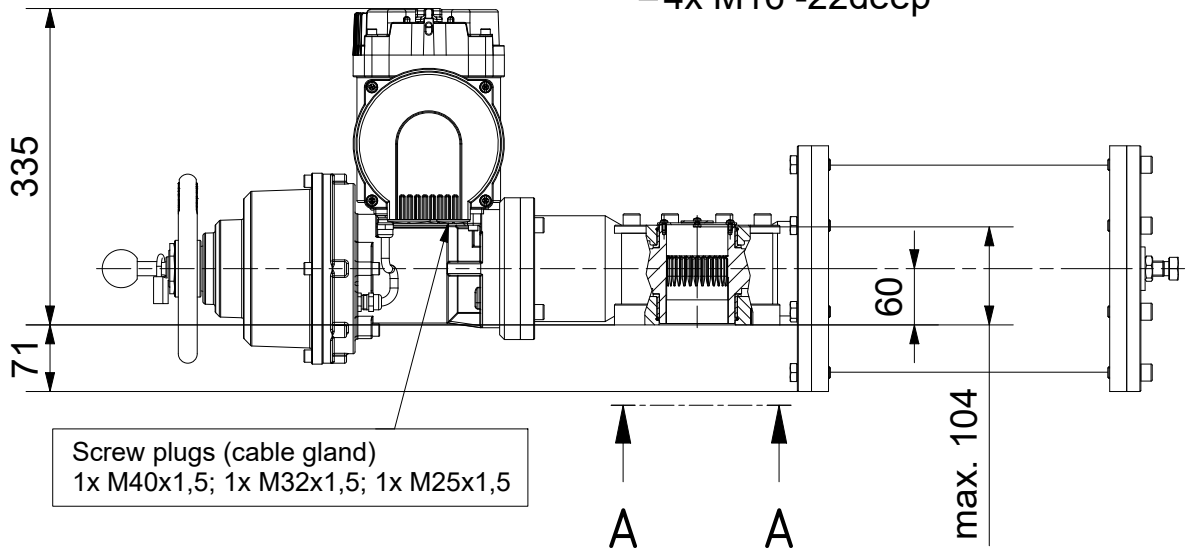
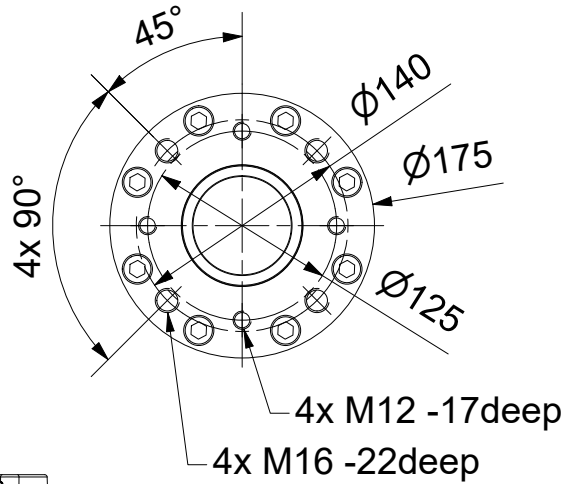
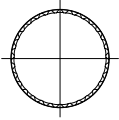
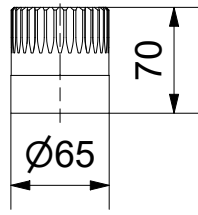
Coupling

Output Drive: F12, F14 acc. DIN5211

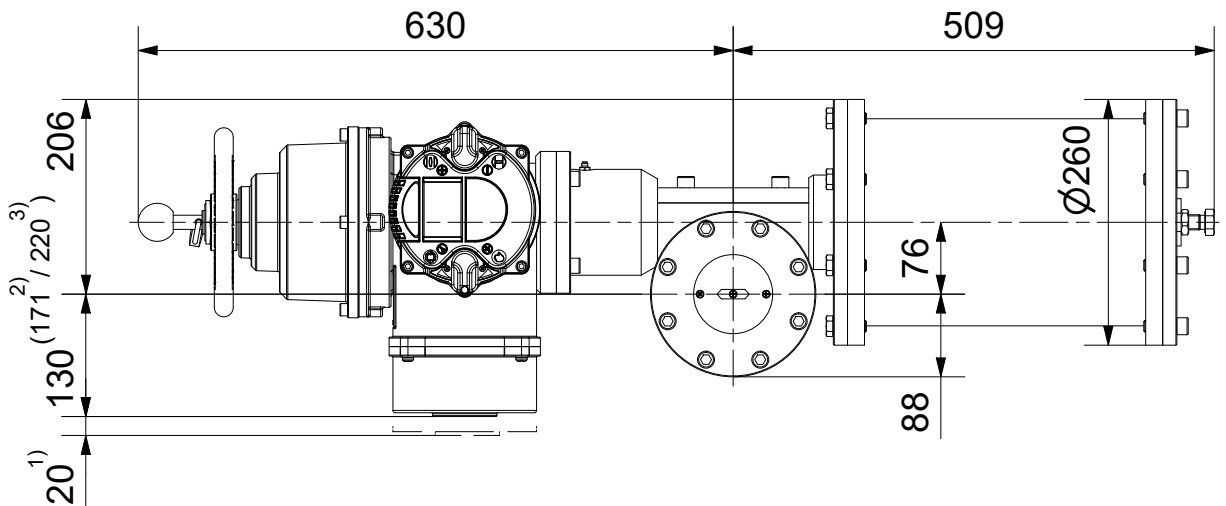
Parallelkey groove acc.to DIN6885

F max.Ø49 / max.□41 (directly Ø64/□52)

A-A (1 : 5)



Screw plugs (cable gland)
1x M40x1,5; 1x M32x1,5; 1x M25x1,5



- 1) Space required for removing cover
- 2) for ex terminal box with bus connection "DP"
- 3) for 3 phase version "SDC480"

SCHIEBEL

Dimensions

All dimensions in mm

M-CM06FSQT100-07E

Actusafe 90° HA

CM06FSQT100 with handwheel, F12+F14
Type: Failsafe CLOSE= cw turning, max. 1000Nm

| | Dated | Name |
|---------|------------|---------|
| drawn | 14.02.2017 | H.Mayer |
| checked | | |

G:\Inventor\Antrieb+Getriebe\Failsafe\FSQT\CM06FSQT100\M-CM06FSQT100-07E.idw



4

3

2

1