

4

3

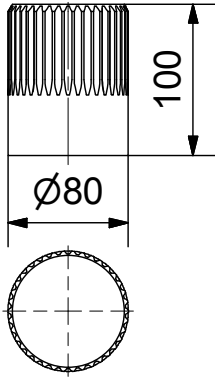
2

1

Coupling

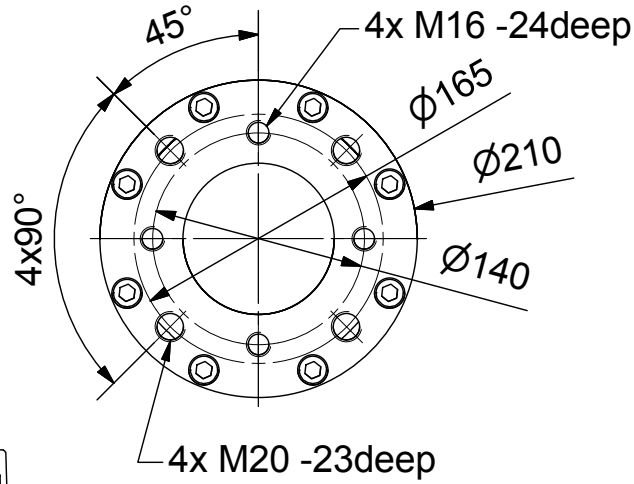
Parallelkey groove acc.to DIN6885

max.Ø60 / max.□48



Output Drive: F14, F16 acc. DIN5211

A-A (1:5)



F

F

E

E

D

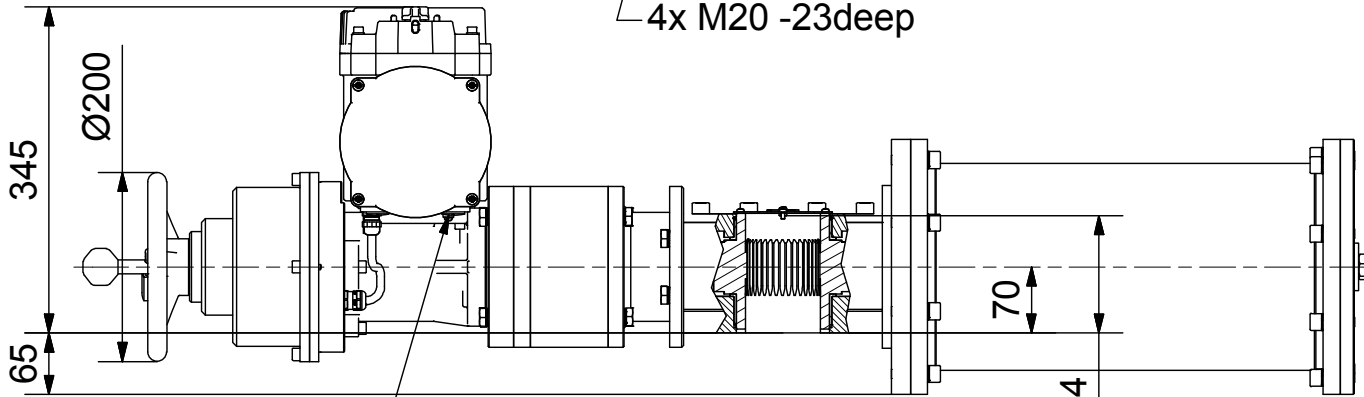
D

C

C

B

B



Screw plugs (cable gland) 1x M40x1,5; 2x M20x1,5

A

A

max. 124

741

644

235
¹⁾ 139 (180² / 229³)
 110

Ø270

100
 35

- 1) Space required for removing cover
- 2) for ex terminal box with bus connection "DP"
- 3) for 3 phase version "SDC480"



REVISIONSVERLAUF

REV.	BESCHREIBUNG	DATUM	AUTOR	GENEHMIGT
A	Length of spring housing	06.09.2016	H.Mayer	KL

SCHIEBEL

Dimensions

All dimensions in mm

Actusafe 90° HA

exCM06FSQT200 with handwheel, F14+F16
 Type: Failsafe CLOSE =cw turning, max. 2000Nm

M-CM06FSQT200-05E

	Dated	Name
drawn	26.06.2017	H.Mayer
checked		

Antriebstechnik
 Gesellschaft m.b.H.
 Josef Benc Gasse 4
 A - 1230 Vienna

G:\Inventor\Failsafe\CMFSQT\CM06FSQT200\M-CM06FSQT200-05Ea.idw



4

3

2

1