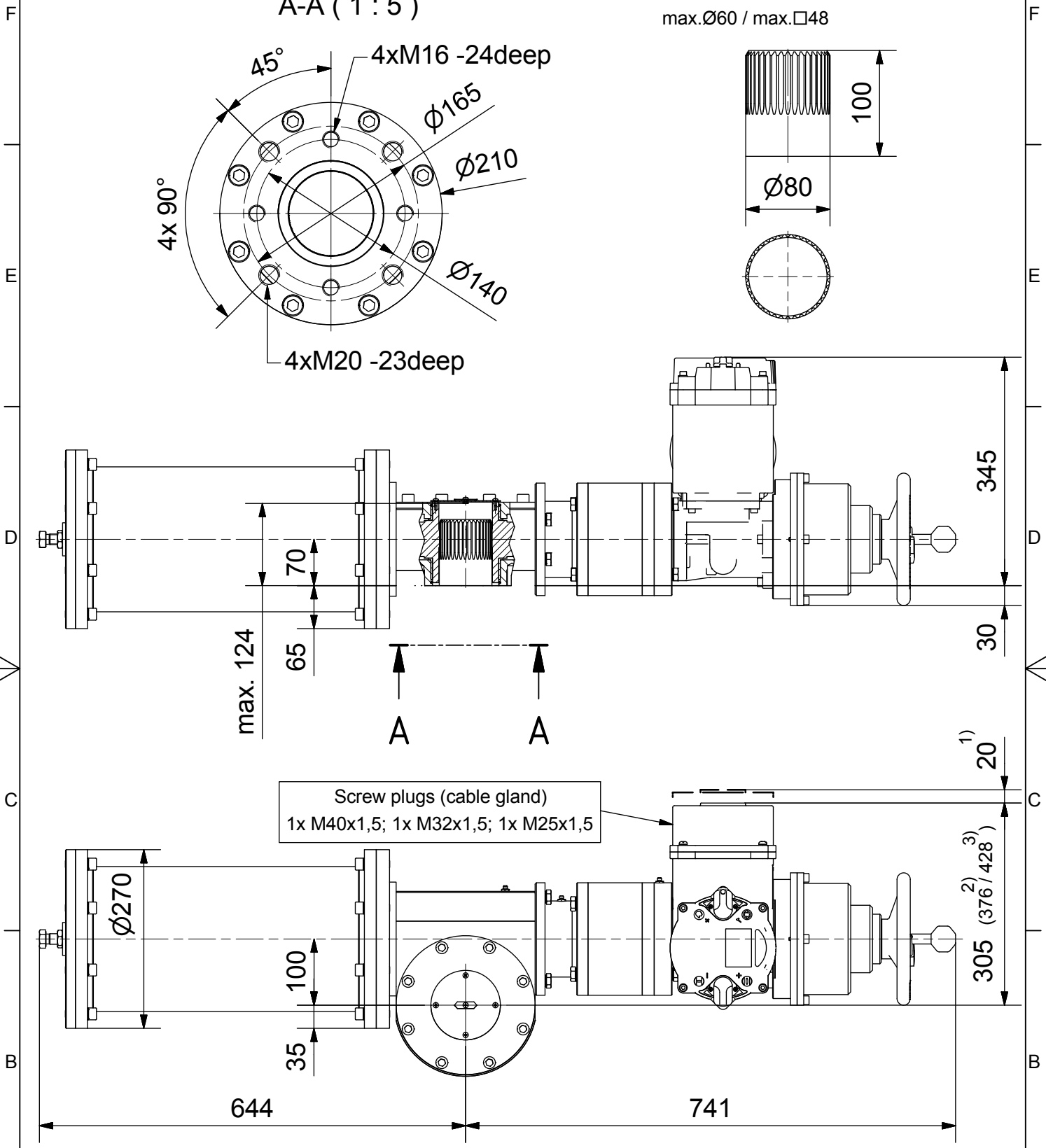
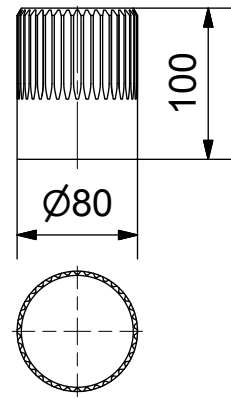
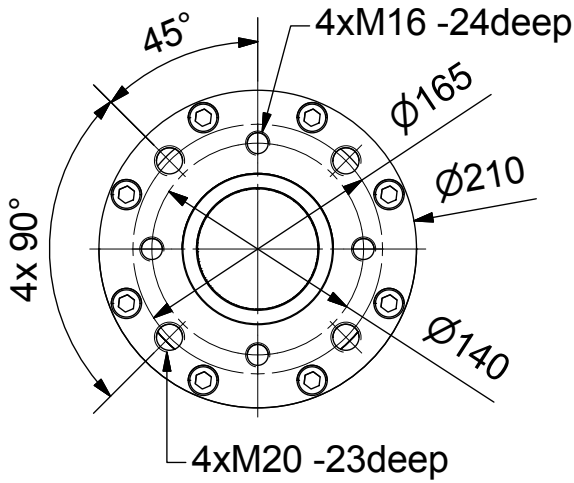


Output Drive: F14, F16 acc. DIN5211

Coupling

Parallelkey groove acc.to DIN6885
max.Ø60 / max.□48

A-A (1 : 5)



Screw plugs (cable gland)
1x M40x1,5; 1x M32x1,5; 1x M25x1,5

- 1) Space required for removing cover
- 2) for terminal box with bus connection "DP"
- 3) for 3 phase version "SDC480"

SCHIEBEL	Dimensions		All dimensions in mm		M-CM06FSQT200-7-1E
	<p>Actusafe 90° HA CM03FSQT60 F10+F12 Type: Failsafe OPEN= ccw turning, 600Nm</p>				
Antriebstechnik Gesellschaft m.b.H. Josef Benc Gasse 4 A - 1230 Vienna	drawn	Dated	Name		A
	checked	02.11.2016	H.Mayer		
	G:\Inventor\Failsafe\CMFSQT\CM06FSQT200\M-CM06FSQT200-7-1E.idw				

