

4

3

2

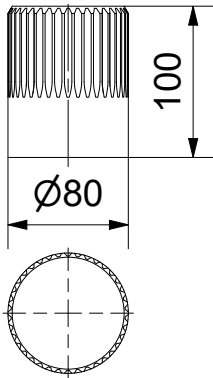
1

Coupling

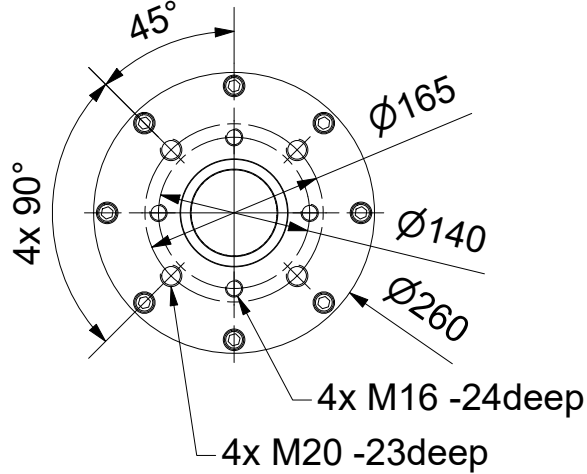
Output Drive: F14, F16 acc. DIN5211

Parallelkey groove acc.to DIN6885

max.Ø60 / max.□48 (directly Ø80/□63)



A-A (1 : 7)



F

F

E

E

D

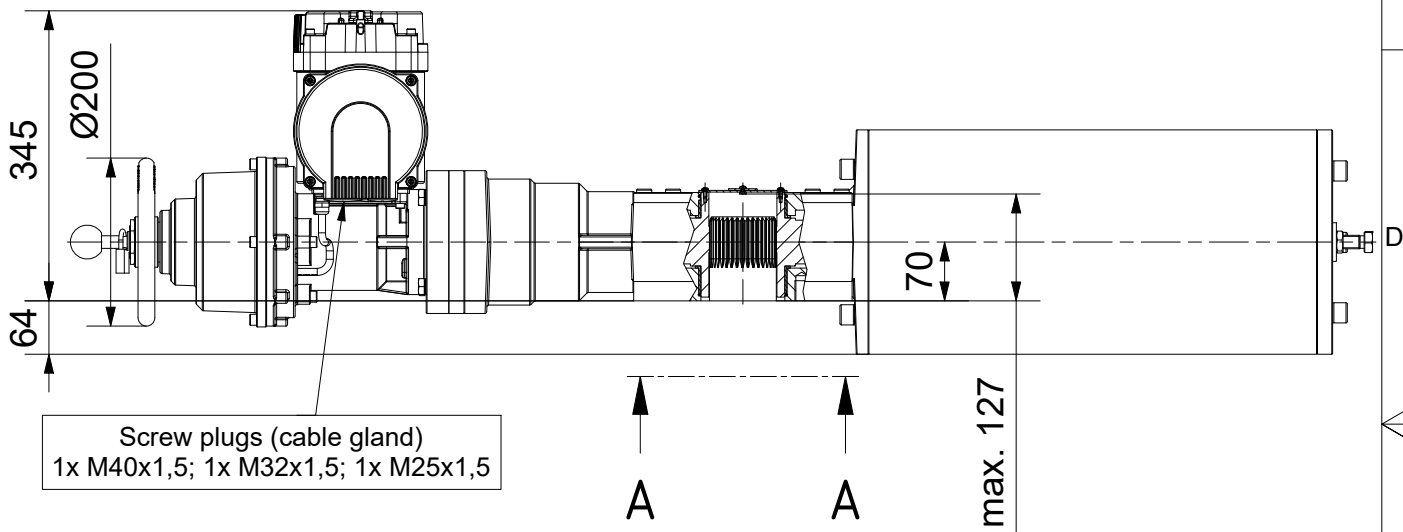
D

C

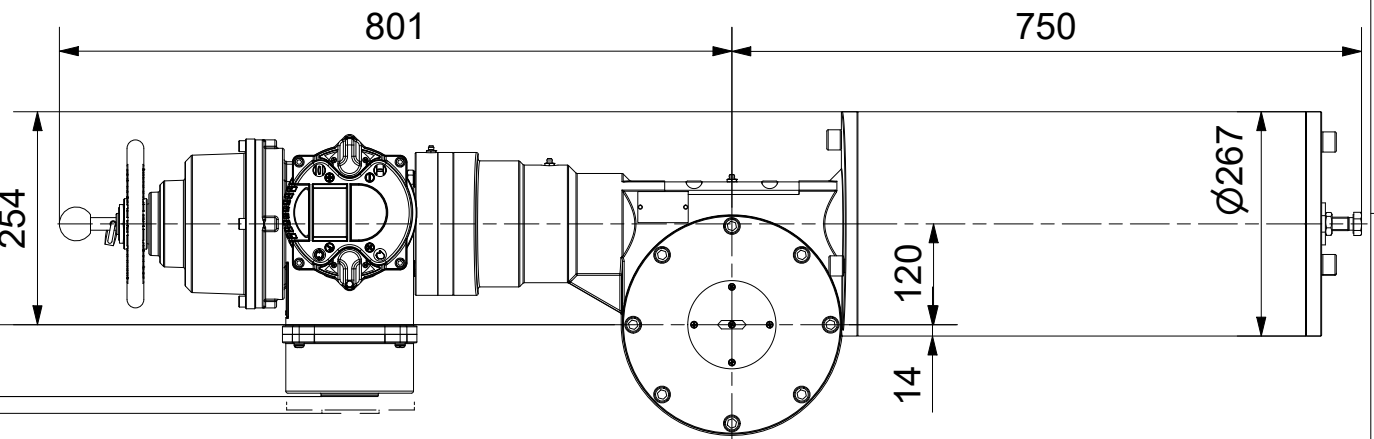
C

B

B



86 (157² / 178³)
254
20¹⁾



- 1) Space required for removing cover
- 2) for ex terminal box with bus connection "DP"
- 3) for 3 phase version "SDC480"

SCHIEBEL

Dimensions

All dimensions in mm

M-CM06FSQT300-23E

Actusafe 90°

CM06FSQT300 with handwheel, F14+F16
Type: Failsafe CLOSE= cw turning, max. 3000Nm

	Dated	Name
drawn	25.01.2018	H.Mayer
checked		

G:\Inventor\Antrieb+Getriebe\Failsafe\FSQT\CM06FSQT300\M-CM06FSQT300-23E.idw



4

3

2

1