

4

3

2

1

## Coupling

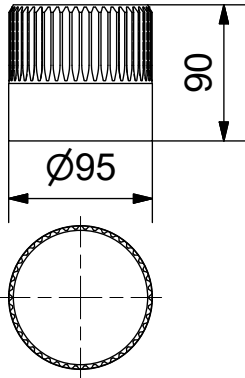
Output Drive: F16, F25 acc. DIN5211  
Parallel key groove acc.to DIN6885

Parallel key groove acc.to DIN6885

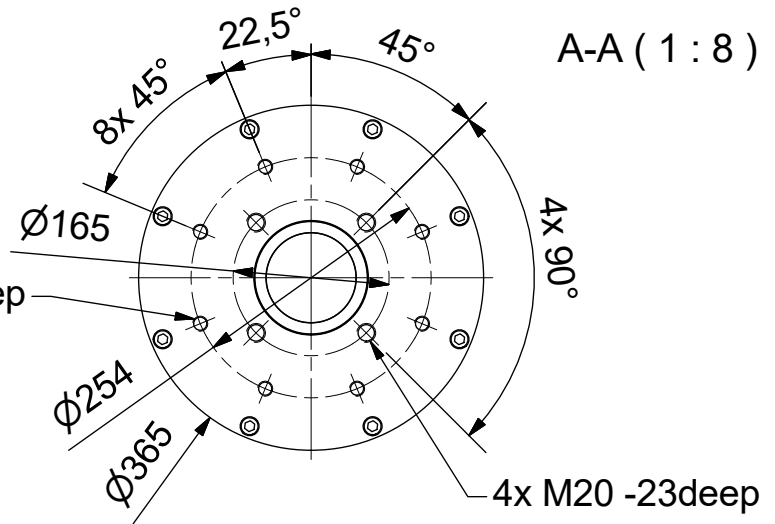
max.Ø75 / max.□60

F

F



8x M16 -24deep

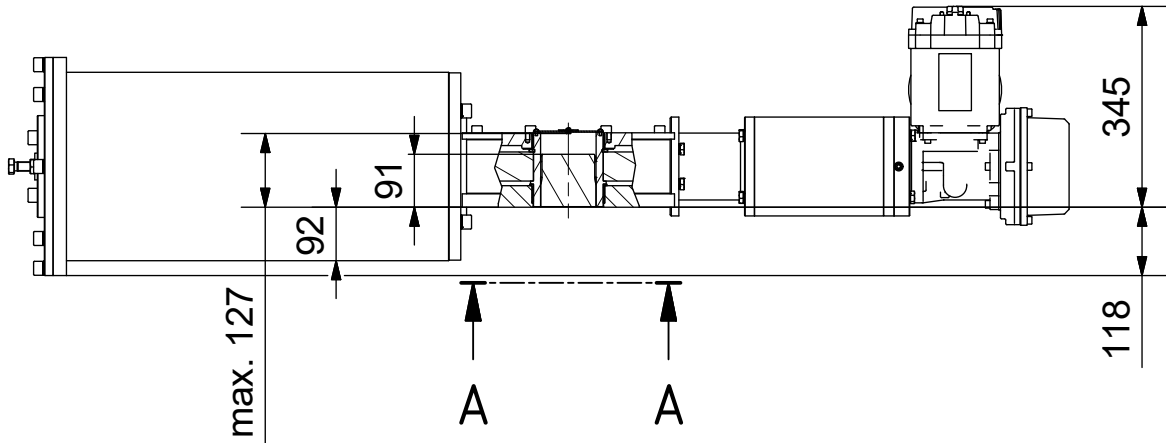


E

E

D

D



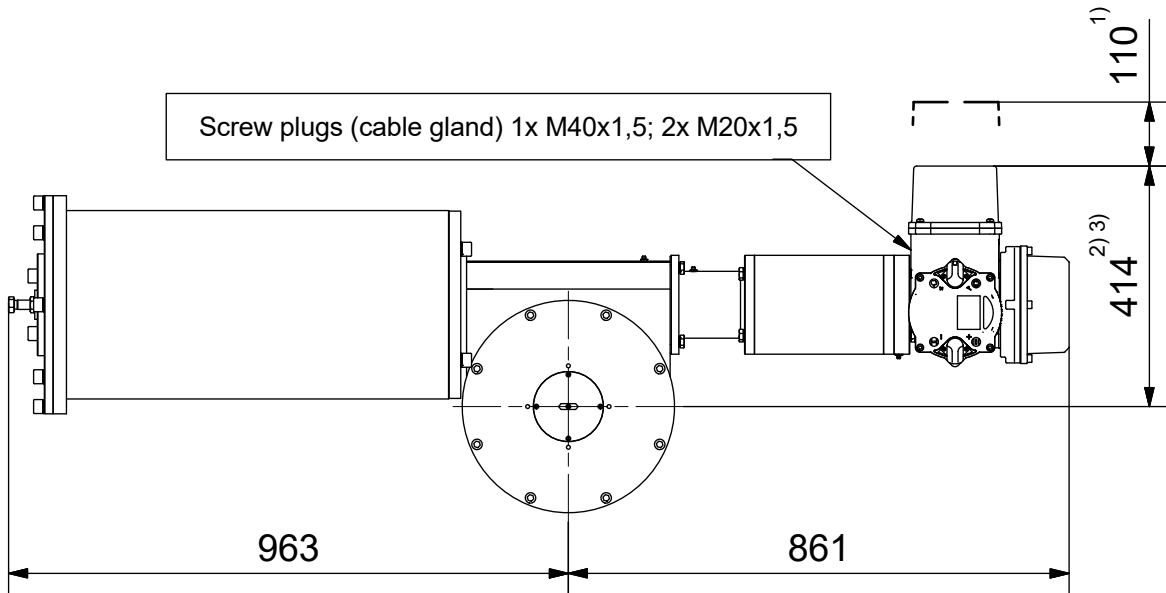
C

C

Screw plugs (cable gland) 1x M40x1,5; 2x M20x1,5

B

B



1) Space required for removing cover

2) for ex terminal box with bus connection "DP" / L= 455mm

3) for 3 phase version "SDC480" / L= 504mm

**SCHIEBEL**

## Dimensions

All dimensions in mm

M-CM06FSQT200-04-3E

A

A

Antriebstechnik  
Gesellschaft m.b.H.  
Josef Benc Gasse 4  
A - 1230 Vienna

**Actusafe 90°**  
**exCM06FSQT500 F16+F25**  
**Type: Failsafe OPEN= ccw turning, 5000Nm**

	Dated	Name
drawn	07.08.2018	KL
checked		

G:\Inventor\Failsafe\CMFSQT\CM06FSQT500\M-CM06FSQT500-04-3E.idw



4

3

2

1