

4

3

2

1

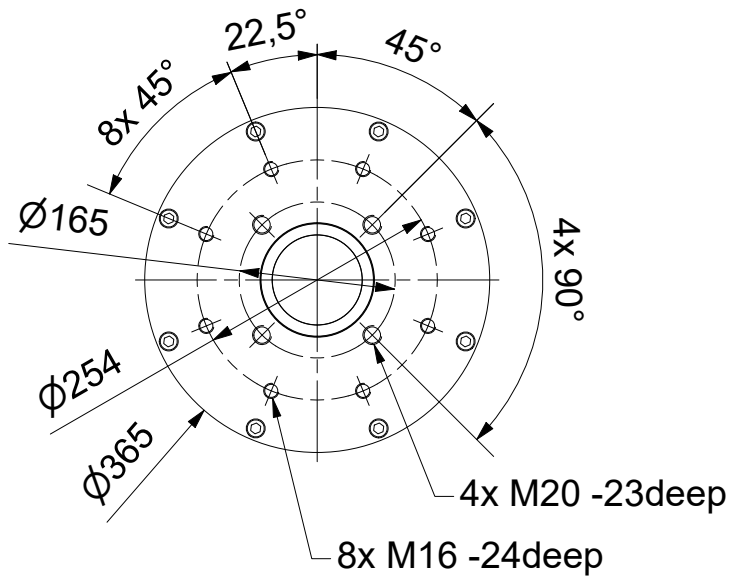
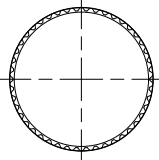
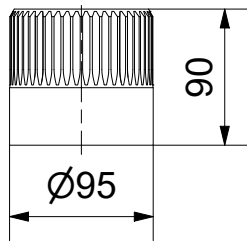
Coupling

A-A (1 : 8)

Output Drive: F16, F25 acc. DIN5211

Parallelkey groove acc.to DIN6885

F max.Ø60 / max.□48 (directly Ø80/□63)

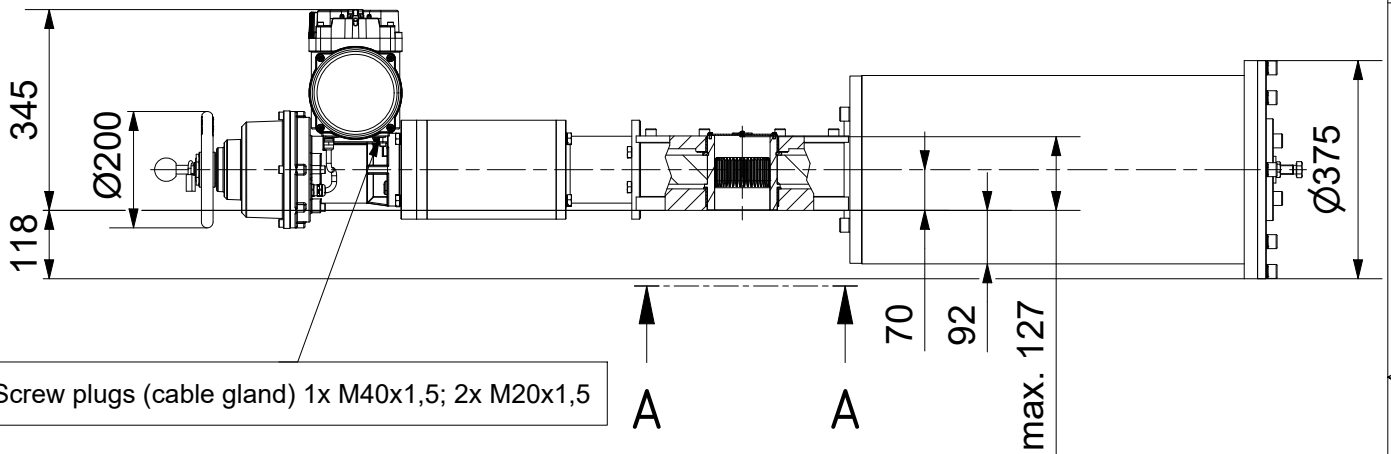


E

E

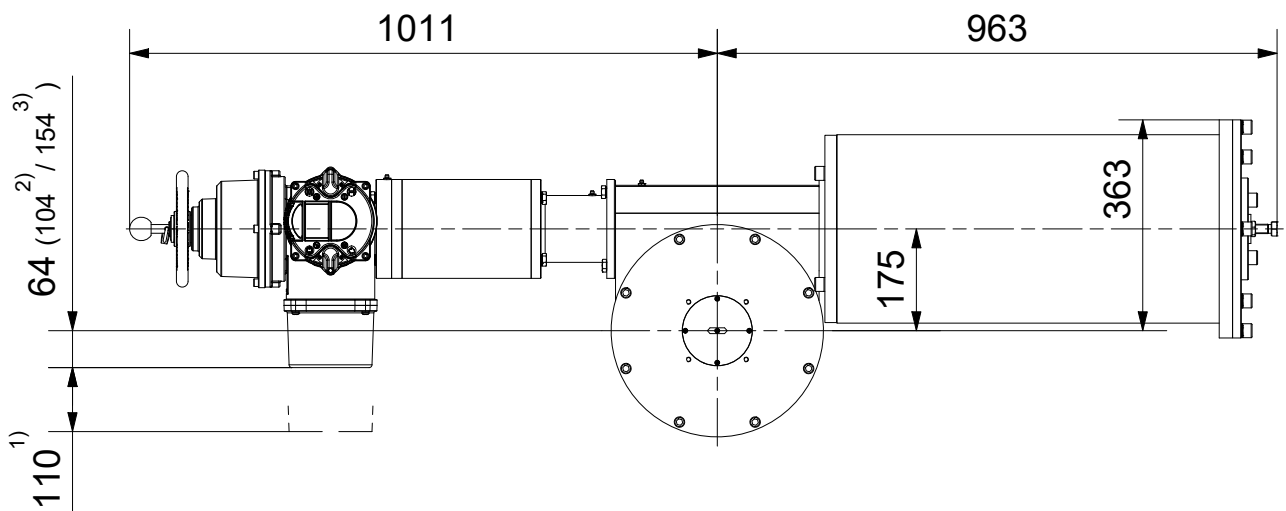
D

D



C

C



B

B

- 1) Space required for removing cover
 2) for ex terminal box with bus connection "DP"
 3) for 3 phase version "SDC480"

**SCHIEBEL**

Dimensions

All dimensions in mm

M-CM06FSQT500-05-2E

A

A

Antriebstechnik
 Gesellschaft m.b.H.
 Josef Benc Gasse 4
 A - 1230 Vienna

Actusafe 90°
 exCM06FSQT500 with handwheel, F16+F25
 Type: Failsafe CLOSE =cw turning, max. 5000Nm

	Dated	Name
drawn	07.08.2018	KL
checked		

G:\Inventor\Antrieb+Getriebe\Failsafe\FSQT\CM06FSQT500\M-CM06FSQT500-05-2E.idw



4

3

2

1