

4

3

2

1

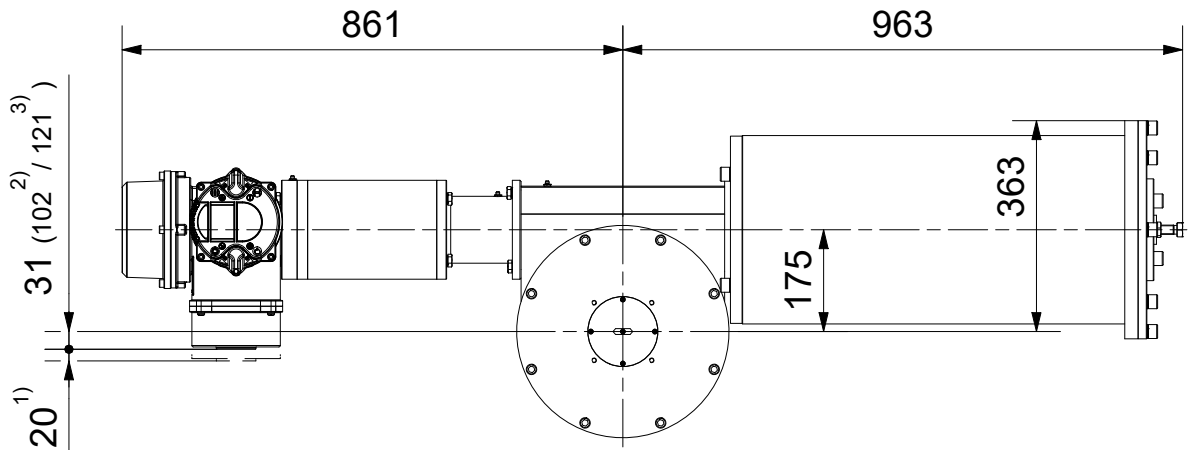
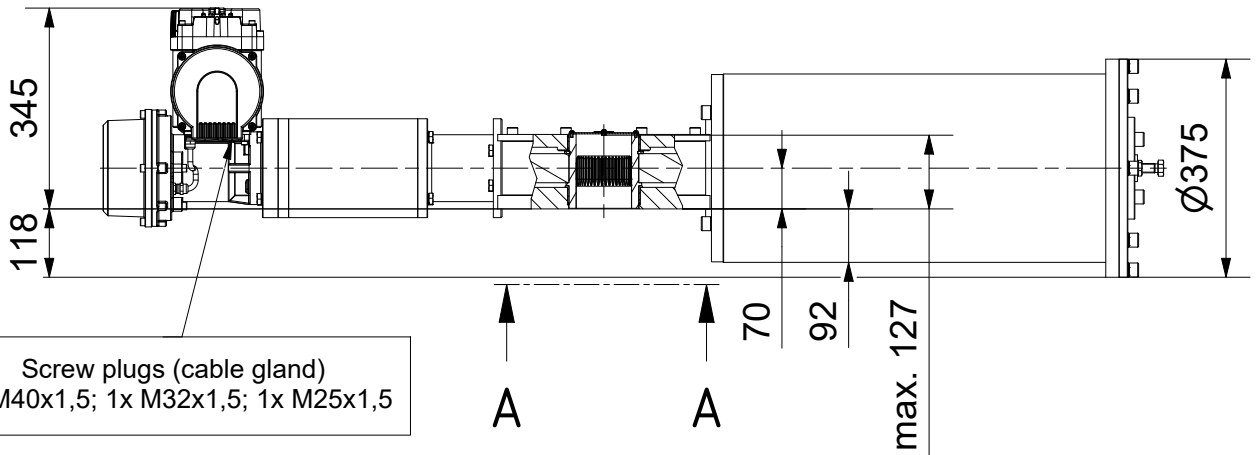
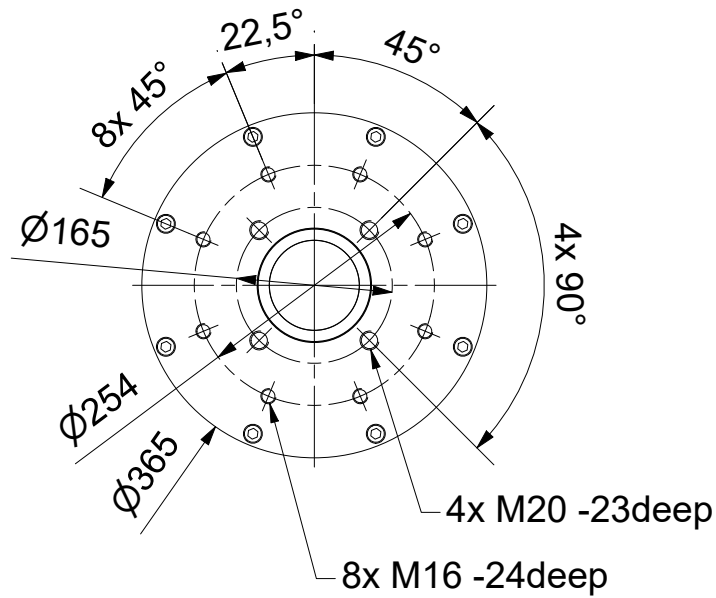
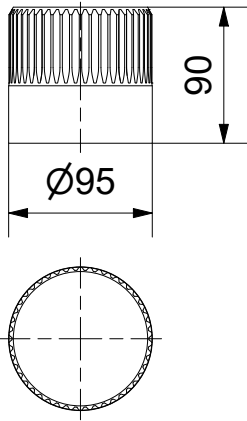
Coupling

Parallelkey groove acc.to DIN6885

F max.Ø75 / max.□60 (directly Ø95/□75)

A-A (1 : 8)

Output Drive: F16, F25 acc. DIN5211



- 1) Space required for removing cover
- 2) for ex terminal box with bus connection "DP"
- 3) for 3 phase version "SDC480"

SCHIEBEL

Dimensions

All dimensions in mm

M-CM06FSQT500-06-3E

Actusafe 90°

CM06FSQT500 F16+F25

Type: Failsafe CLOSE= cw turning, max. 5000Nm

Antriebstechnik
Gesellschaft m.b.H.
Josef Benc Gasse 4
A - 1230 Vienna

	Dated	Name
drawn	07.08.2018	KL
checked		

G:\Inventor\Antrieb+Getriebe\Failsafe\FSQT\CM06FSQT500\M-CM06FSQT500-06-3E.idw



4

3

2

1